



Information & Specification

1

Profile Details Overview

2

Profile Details Technical Specifications

3

Accessories

4

PRODUCT INFORMATION

Our premium product line offers a .044" thick panel and a complete selection of 17 Bold Premium & 14 Natural Standard colour options. Profiles feature a cedar-grain texture in a low-gloss finish with a distinctive deep silhouette for rich shadow lines. Board & Batten profile is also available for vertical applications.

SPECIFICATIONS

Protect your home investment with Sentry!

- **Available in the full spectrum of Mitten colours**
- **Roll-over nail hem** increases rigidity to resist bowing and buckling
- **Low gloss color-rich finish**, with cedar-grain texture
- **Premium .044"** heavy wall panels designed to shield and protect your home
- **Distinctive deep silhouette** provides rich shadow lines
- **Contoured lock system** design helps connect your panels securely to walls and stay there for added "peace of mind"
- **Withstands winds** up to 180 mph
- **Lifetime Fade Protection Guarantee**
- **Limited Lifetime Warranty**

Check with your local dealer for colours available by profile.



Mitten offers Sentry vinyl siding in 3 profiles: Horizontal, Dutchlap, and Board & Batten.

Horizontal

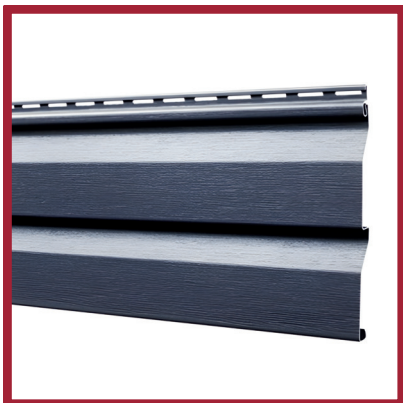
Our horizontal profile offers clean lines and the classic natural grain of traditional wood siding. This universal siding is suitable for nearly every style of home and is a consistent performer in even the most severe climate.

Dutchlap

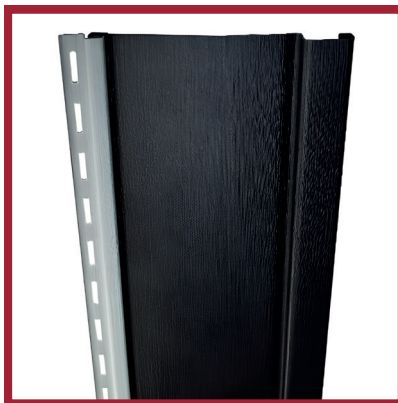
Our dutchlap profile is made to look like wood siding hand carved by old world craftsmen. The shape adds strength to the siding and the groove in the top of the dutchlap siding creates an appearance of depth and complements traditional architecture.

Board & Batten

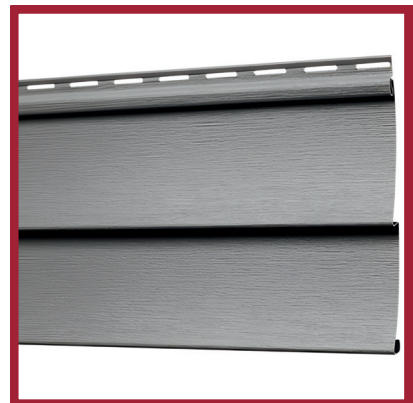
Our Board & Batten profile combines wide and narrow vertical panels in a simple, yet beautiful, design well suited to distinctive architectural styles.



Double 4.5" Dutchlap

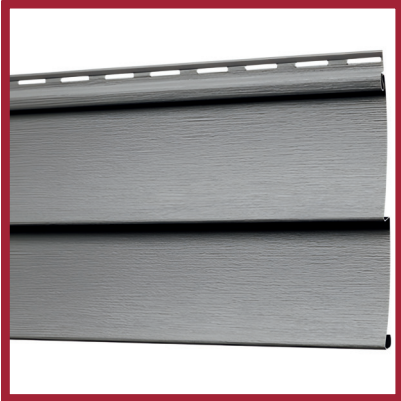


Board & Batten



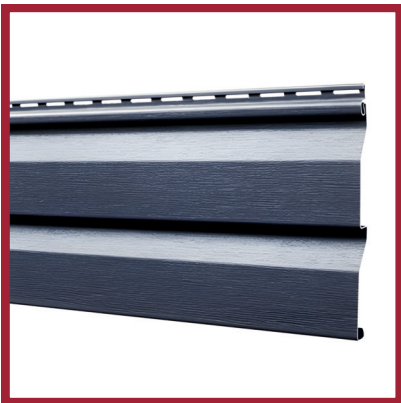
Double 4" Horizontal





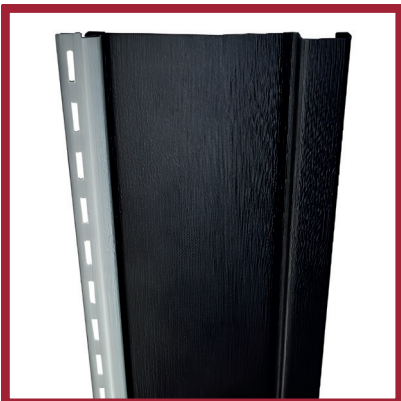
SENTRY DOUBLE 4" HORIZONTAL

Length/Piece	12'6"	3.81m
Width/Piece	8"	20.32cm
Panels/Carton	24	24
Coverage/Carton	200sq.ft.	18.5m ²
Nom. Thickness	.044"	1.12mm



SENTRY DOUBLE 4.5" DUTCHLAP

Length/Piece	12'1"	3.68m
Width/Piece	9"	22.86cm
Panels/Carton	22	22
Coverage/Carton	200sq.ft.	18.58m ²
Nom. Thickness	.044"	1.12mm



SENTRY BOARD & BATTEN

Length/Piece	10'	3.04m
Width/Piece	7"	17.78m
Panels/Carton	17	17
Coverage/Carton	100sq.ft.	9.29m ²
Nom. Thickness		
(Standard Colours)	.045"	1.14mm
Nom. Thickness		
(Premium Colours)	.050"	1.27mm

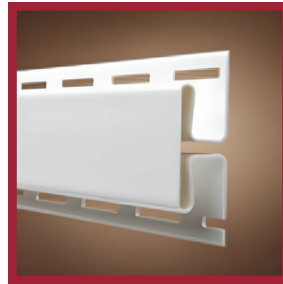




5/8" J-Channel - Sentry



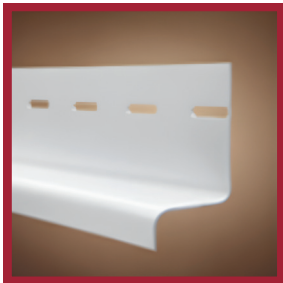
7/8" J-Channel - Sentry



H-Trim - Sentry



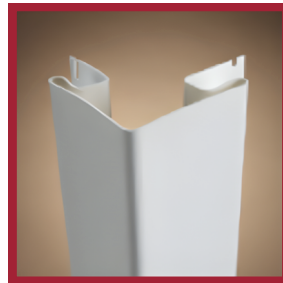
Finish Trim - Sentry



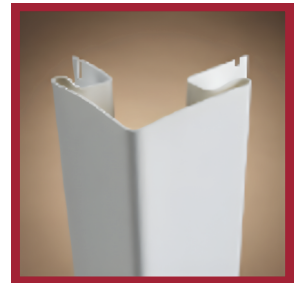
Drip Cap - Sentry



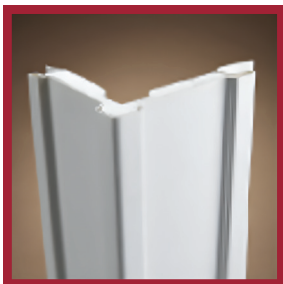
Inside Corner Post - Sentry



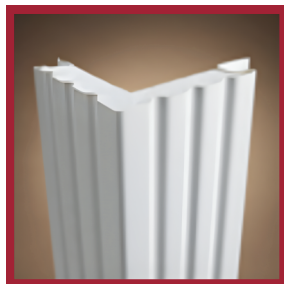
3" Outside Corner Post - 10' - Sentry



3" Outside Corner Post - 12'



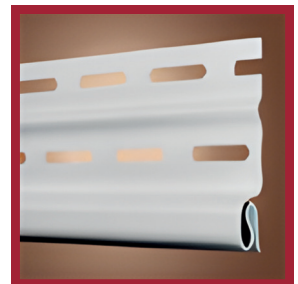
5.5" Traditional Outside Corner Post - 20'



5.5" Fluted Outside Corner Post - 20'



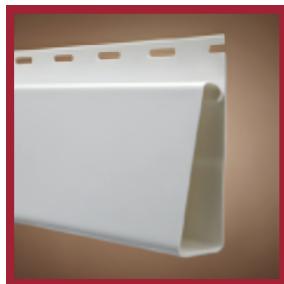
Recessed Window & Door Trim



Starter Strip



3.5" Window & Door Trim



Window Casing Trim

